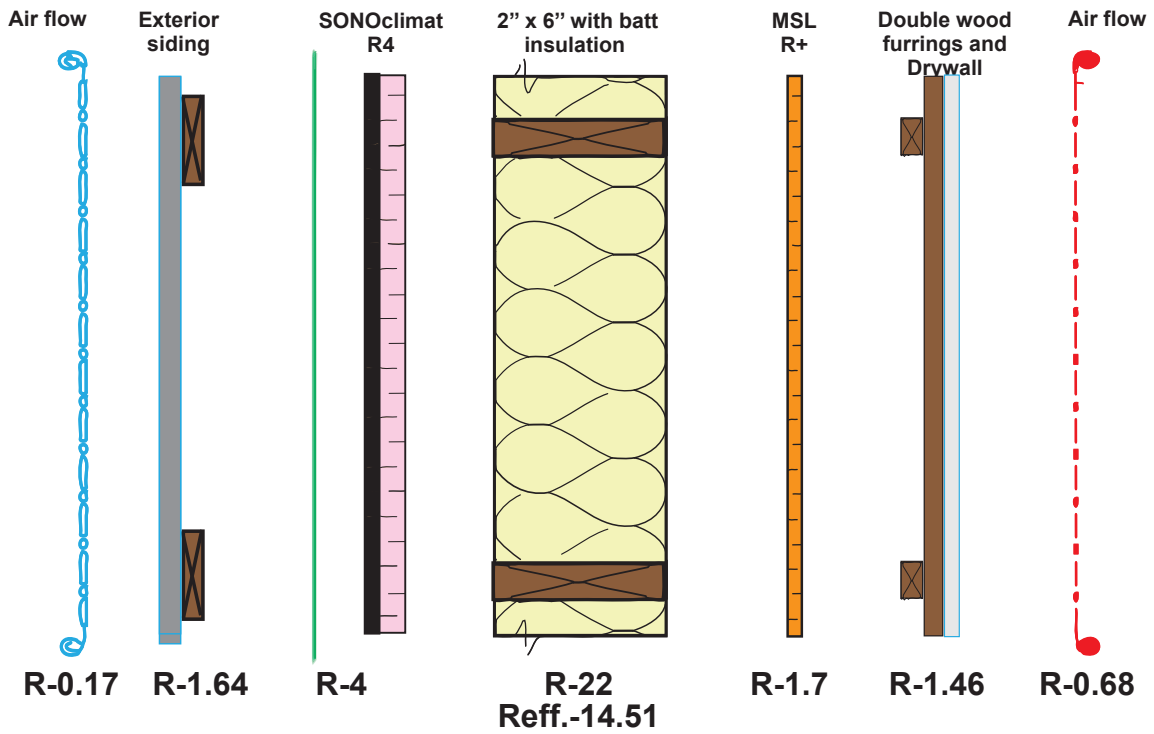


## Exterior Wall

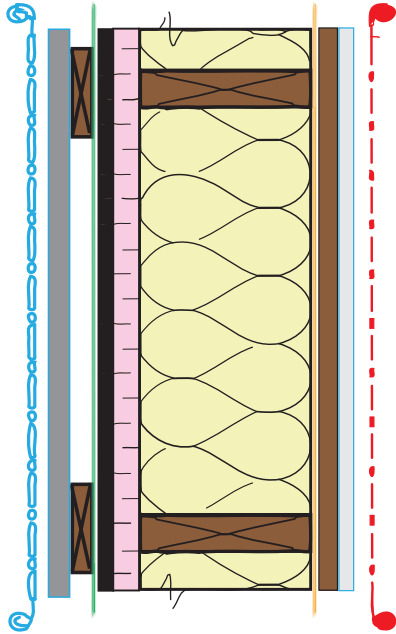
Products:	R* Value	RSI* Value
<b>Outside air flow</b>	0.17	0.03
<b>Siding</b>	0.62	0.11
<b>Wood furrings 19.5 mm (0,75 in) or air space 25 mm (1 in)</b>	1.02	0.18
<b>Weather barrier</b>	0.00	0.00
<b>SONOclimat R4 28.5 mm (1.125 in)</b>	4.00	0.70
<b>Stud 38 x 140 mm (2 x 6 in) at 406 mm (16 in) o.c. with batt insulation 140 mm (5.5 in)</b>	22.00	3.87
<b>MSL R+ (vapor barrier panel)</b>	1.70	0.30
<b>Double wood furrings 39 mm (1.5 po)</b>	1.02	0.18
<b>Drywall 12.7 mm (0.5 po)</b>	0.44	0.08
<b>Inside air flow</b>	0.68	0.12

\*R value and RSI based on the total thickness of the product.



R total = 31.65 (RSI = 5,57)

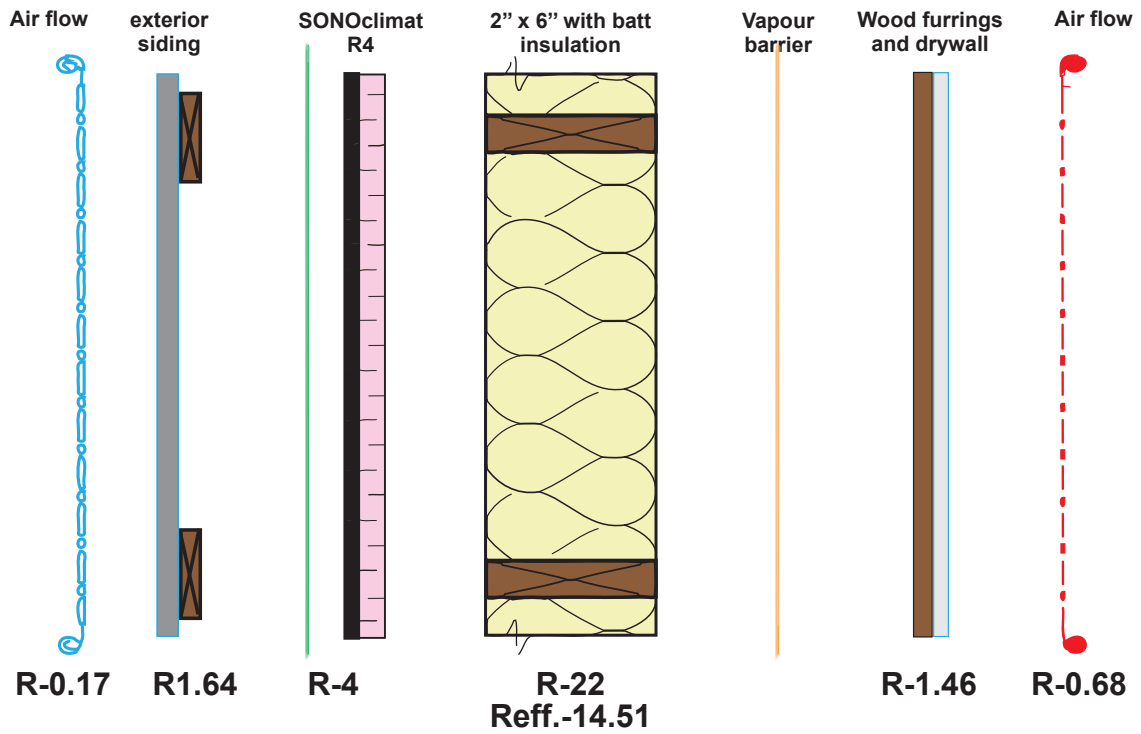
R effectif = 24.16 (RSI = 4.26)



### Exterior Wall

Products:	R* Value	RSI* Value
<b>Outside air flow</b>	0.17	0.03
Siding	0.62	0.11
Wood furrings 19.5 mm (0,75 in) or air space 25 mm (1 in)	1.02	0.18
<b>Weather barrier</b>	0.00	0.00
<b>SONOclimat R4</b> 28.5 mm (1.125 po)	4.00	0.70
Stud 38 x 140 mm (2 x 6 in) at 406 mm (16 in) o.c. with batt insulation 140 mm (5.5 in)	22.00	3.87
<b>Polythene Vapor Barrier</b>	0.00	0.00
Wood furrings 19.5 mm (0.75 po)	1.02	0.18
Drywall 12.7 mm (0.5 po)	0.44	0.08
<b>Inside air flow</b>	0.68	0.12

\*R value and RSI based on the total thickness of the product.



R total = 29.95 (RSI = 5.28)

R effectives= 22.46 (RSI = 3.97)